

PART OF N.W. 1/4 OF SECTION 22, T.5N.,R.1W., S.L.B.&M.
MAIN POINT SOUTH SUBDIVISION NO.3

187

PHASE 2

LOTS 100 TO 110 & 125 TO 130
 IN SOUTH OGDEN CITY

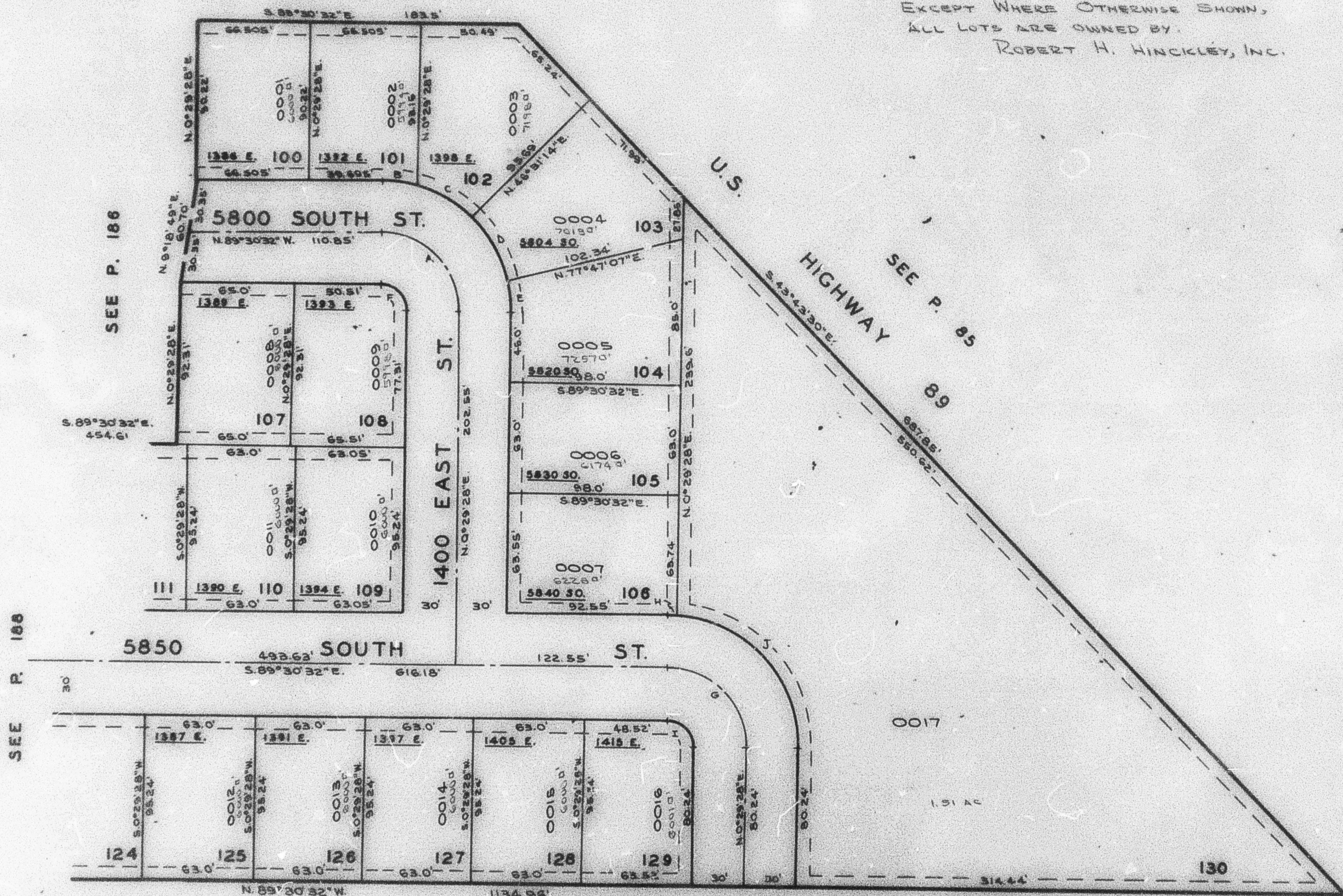
TAXING UNIT: 27

SCALE 1"=50'

PREFIX:07-187

SEE P. 85

EXCEPT WHERE OTHERWISE SHOWN,
 ALL LOTS ARE OWNED BY:
 ROBERT H. HINCKLEY, INC.



SEE P. 85

CURVE DATA

A	B	C	D	E	F	G	H	I	J
Δ = 90°00'	20°56'41"	25°05'05"	31°15'53"	12°42'21"	90°00'	90°00'	4°10'19"	90°00'	85°45'41"
R = 45.00'	75.00'	75.00'	75.00'	75.00'	15.00'	45.00'	75.00'	15.00'	75.00'
L = 70.68'	27.42'	32.84'	40.93'	16.68'	25.96'	73.69'	5.46'	25.96'	112.35'
T = 45.00'						45.00'			
Lc = 63.64'	27.26'	32.51'	40.42'	16.59783'		63.64'	5.46'		102.14'

NOTE: 7' UTILITY EASEMENTS EACH SIDE OF PROPERTY
 LINE AS INDICATED BY DASHED LINES.
 SEE ORIGINAL PLAT IN BOOK 19, PAGE 67